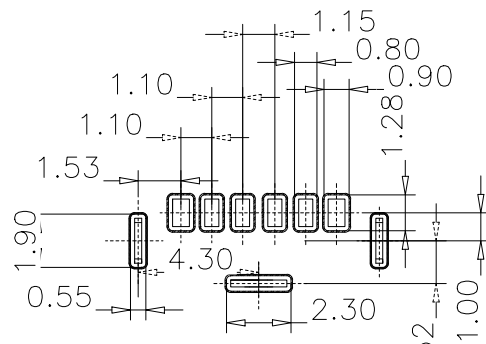
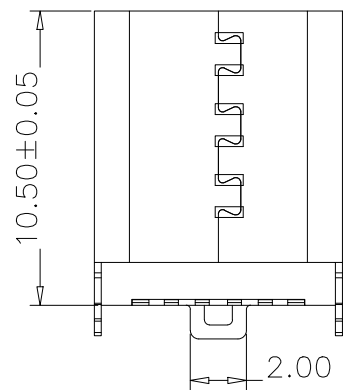


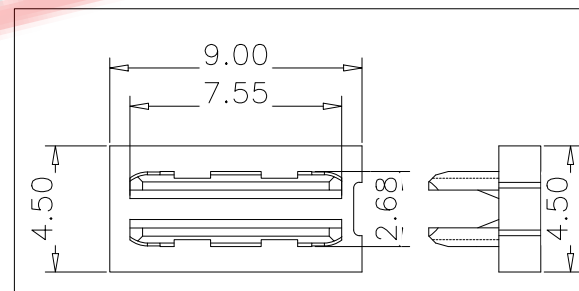
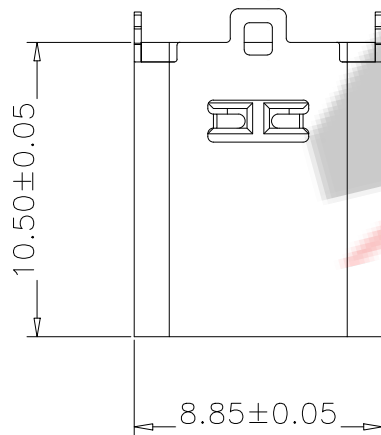
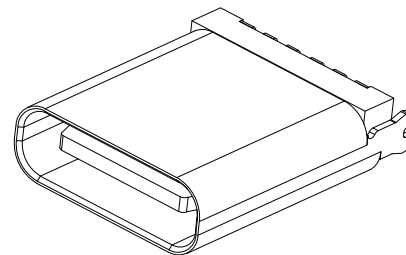
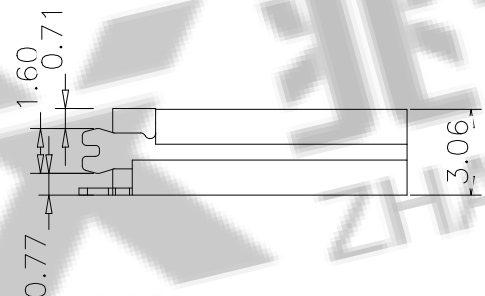
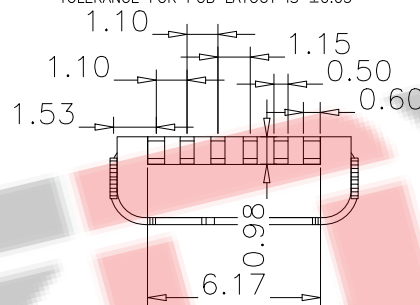
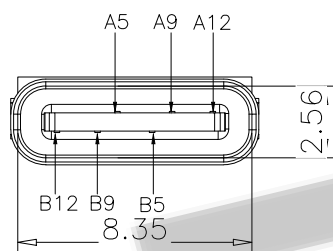
RoHS Compliant

Halogen Free

customer drawing



RECOMMEND P.C.B LAYOUT (COMPONENT SIDE)  
TOLERANCE FOR PCB LAYOUT IS ±0.05



USB TYPE C PIN ASSIGNMENTS

| PIN NUMBER | SIGNAL NAME | PIN NUMBER | SIGNAL NAME |
|------------|-------------|------------|-------------|
|            |             | B12        | GND         |
|            |             | B9         | VBUS        |
| A5         | CC1         |            |             |
|            |             | B5         | CC2         |
| A9         | VBUS        |            |             |
| A12        | GND         |            |             |

| NO | PART        | Q'TY | Material                           |
|----|-------------|------|------------------------------------|
| 1  | SHELL       | 1    | ZINC ALLOY, NI30u"Min PLATED       |
| 2  | CONTACT     | 6    | C2680, TIN80u"/Au1u"/NI30u" PLATED |
| 3  | 1MD HOUSING | 1    | LCP UL94 V-0 BLACK                 |
| 4  | CAP         | 1    | LCP UL94 V-0 BLACK                 |

备注 (NOTE):

1 材质:

1.1 胶芯: LCP UL94 V-0

1.2 端子: C2680, T=0.2mm; 镍底, 镀金

1.3 外壳: SUS201/304 表面镀镍

2 电气特性:

2.1 接触区: 接触电阻 40mΩ Max, 允许 10mΩ 变化量. 测试条件: 20mv, 100mA 下测量.

2.2 接触电流: 3A VBUS 引脚; 1.25A 用于 GND 引脚; 其他引脚为 0.25A.

2.3 额定电压: 5V.

2.4 耐电电压: 100VAC.

2.5 绝缘电阻: 至少 100 兆欧.

3 机械性能:

3.1 插入力: 0.5-2.0Kg

3.2 拔出力: 0.6-2.04Kg

3.3 插拔次数: 10000 次.

4 工作环境: -20°C to +85°C.

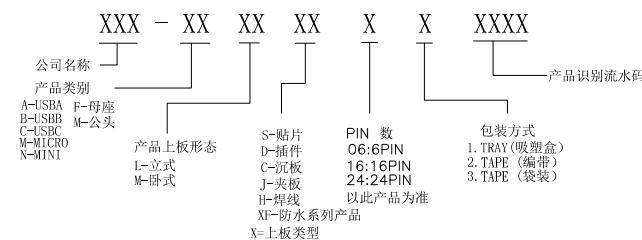
5 耐焊接热: 端子浸入 250±5°C 的锡槽中; 历时 3-5S ± 0.5Sec, 沾锡面积 95% 以上

6 外观: 部件可以承受以下焊接条件:

温度 250°C, 时间 8-10 秒, 外观无损坏变形

7 包装: 编带, 800pcs 一盘

料号编码:



深圳市兆达鑫科技有限公司

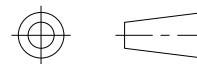
Shenzhen zhaodaxin Technology Co., Ltd

TITLE:

TYPE-C6P 立贴 10.5 三脚

工程图

THIRD ANGLE PROJECTION



PART NO.: ZDX-CFLS062ZH20

TEL: 0755-29888153

WEB: <http://www.szzdjmkj.com/>

UNIT:

mm

SCALE:

1:1

SIZE:

A4

SHEET:

1/2